

SIRIA 1996 2 LIBRAS AC Km #125
 SIRIA 1991 1 LIBRA Km #120.2
 SIRIA 1996 10 LIBRAS 60 Ni Km #120
 SUDAFRICA 1980 50 CTMS. Km #87



SUDAN 2006 50 PIASTRAS
 SWAZILANDIA 2005 20 CENTS
 TANZANIA 1972 1 SHILINGI 60 Ni Km #4
 TOGO 1957 25 FRANCS Km #87



TUNEZ 1997 5 MILLIM AL. Km #348
 TUNEZ 1960-1997 20 MILLIM Km 307
 TUNEZ 1960 50 MILLIM Km 308
 TUNEZ 1990 1/2 DINAR 0.9



TUNEZ 2002 5 DINARS Km #440
 UGANDA 1987 10 CHELINES Km #27
 ZAMBIA 1972 20 NGWEE
 ZIMBABWE 2001 5 DOLARES Km #13



ARGLIA 1964 10 CENTIMOS KM#97	ARGLIA 1975 20 CTMS KM#107.2	ARGLIA 1975 50 CTMS KM#109	ARGLIA 1950 100 FRANCS KM#93
--	---------------------------------------	-------------------------------------	---------------------------------------



ARGLIA 1964 1 DINAR KM#100	ARGLIA 1972 1 DINAR KM#104.1	ARGLIA 1972 1 DINAR KM#104.2	ARGLIA 1981 10 DINARS KM#110
-------------------------------------	---------------------------------------	---------------------------------------	---------------------------------------

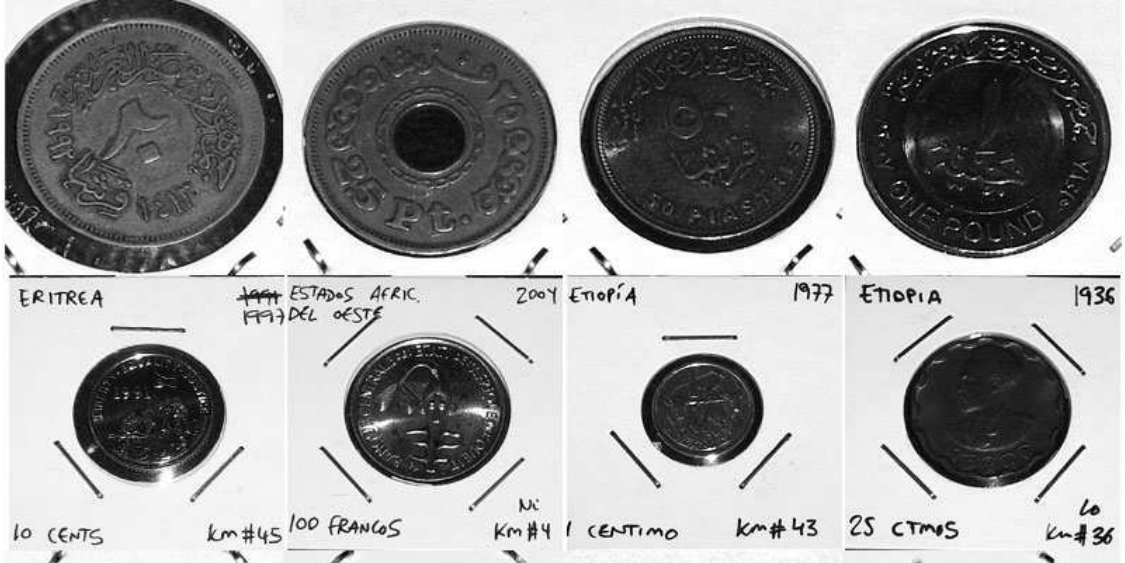
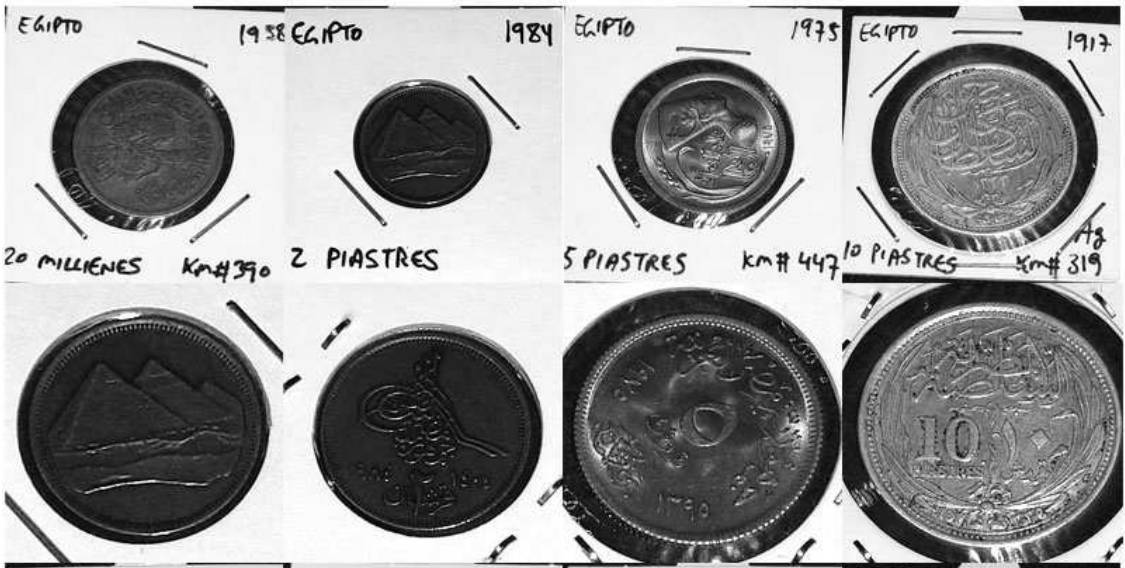


BORUNDI 1993 1 FRANC KM#19	CABO VERDE 2005 200 ESCUDOS KM#19	DJIBOUTI 1996 10 FRANCS KM#23
-------------------------------------	--	--



EGIPTO 1917 1 MILLIEME KM#313	EGIPTO 1952 2 MILLIENES	EGIPTO 1972 5 MILLIENES KM#425	EGIPTO 1967 10 MILLIENES KM#411
--	-------------------------------	---	--





<p>GUINEA-BISSAU</p> <p>50 CENTAVOS</p>	<p>1952 GUINEA ECUATORIAL</p> <p>BR KM#825 PESETAS G.</p>	<p>1969 LIBIA</p> <p>BR KM#32 MILLIEMES</p>	<p>1932 LIBIA</p> <p>1977 1399 KM#250 DIRHAMS 60N KM#2</p>

<p>LIBIA 1975</p> <p>100 DIRHAMS Co/M.</p>	<p>LIBIA 1979</p> <p>6Ni KM#23 1/4 DINAR</p>	<p>LIBIA 2001</p> <p>1369 NiBi KM#2 1/2 DINAR</p>	<p>LIBIA 2004</p> <p>81 ALB KM#2</p>

<p>REP. DE MADAGASCAR 1996</p> <p>5 FRANCS</p>	<p>MADAGASCAR 1996</p> <p>6Ac KM#2 10 FRANCS</p>	<p>MADAGASCAR 1999</p> <p>6Ac KM#22 20 ARIARY</p>	<p>MADAGASCAR 1999</p> <p>KM#24.</p>

<p>MARUECOS 1902</p> <p>10 MARZUNAS</p>	<p>MARUECOS 1912</p> <p>(Bi) Y#17.2 10 MARZUNAS Y#29.1</p>	<p>MARUECOS 1921</p> <p>50 KM#35.1 CENTIMES</p>	<p>MARUECOS PROT. FRANCS 1951</p> <p>2 FRANCS</p>
---	--	---	---

--	--	--	--

MARRUECOS 2002 MARRUECOS 2002 MARRUECOS 1995 MAURICIO 1978



MAURITANIA 1995 NIGERIA 2006 MOZAMBIQUE 1971 MOZAMBIQUE 2003



RHODESIA 1964 1 SH = 10 Cent Col/pi. RHODESIA Y NYASALAND 1957 RHODESIA DEL SUR 1951 RWANDA 2007



REP. ARABE SAHARAVI DEMOCR. 1992 SOMALIA 2000 SEYCHELLES km#35

